A stylized logo featuring a tree-like structure with a vertical trunk and horizontal branches, positioned above several wavy horizontal lines. The logo is rendered in a light blue color against a dark blue background. The background itself is a complex, abstract design with concentric circles, dashed lines, and a circuit-like pattern on the right side.

# **Network Documentation Best Practices**

**What's Important & How To Track It**

# Network Documentation Best Practices

- **Critical network documentation**
- **Useful network documentation**

## Critical Network Documentation

## L1/L2 drawings (Physical)

- Physical connectivity and layout of your network.
- Should consist of all of your network devices and firewalls at a minimum.
- Includes EtherChannels between two devices.
- Include interfaces on each end of the link.
- Simple, clean, and informative.



## Shapes

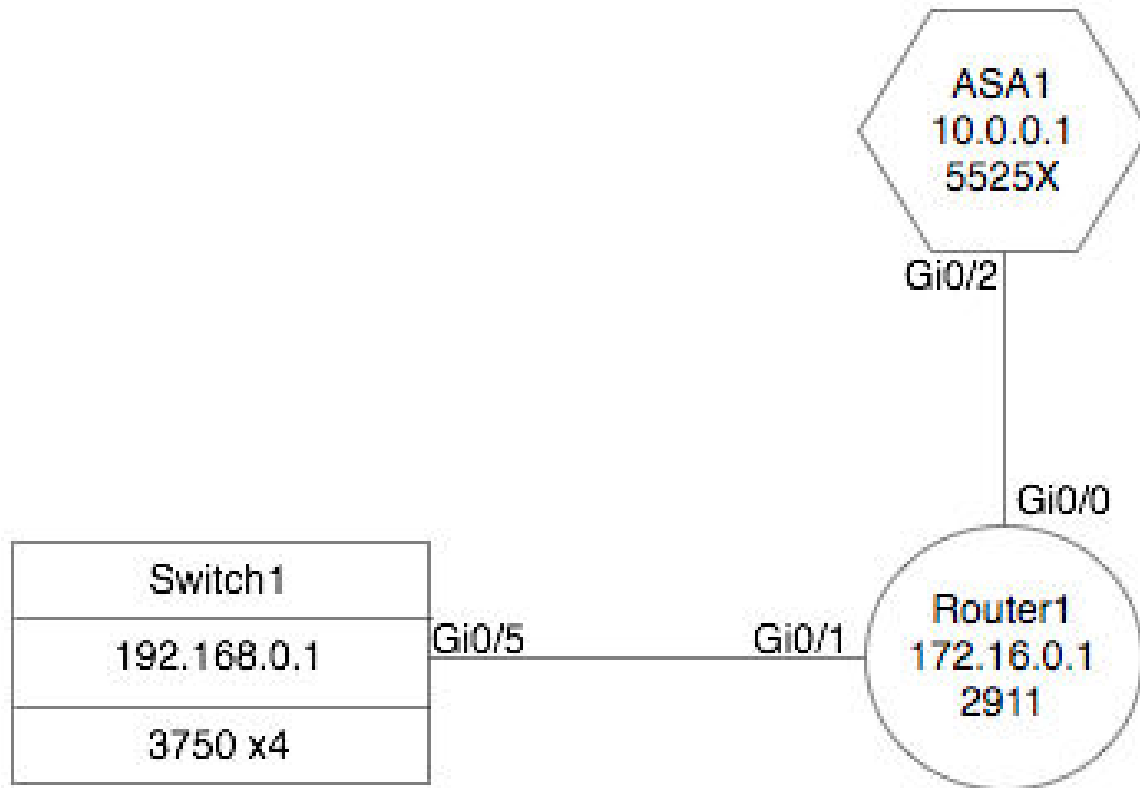


- Switches (and other devices)

- Routers

- Firewalls

## Physical

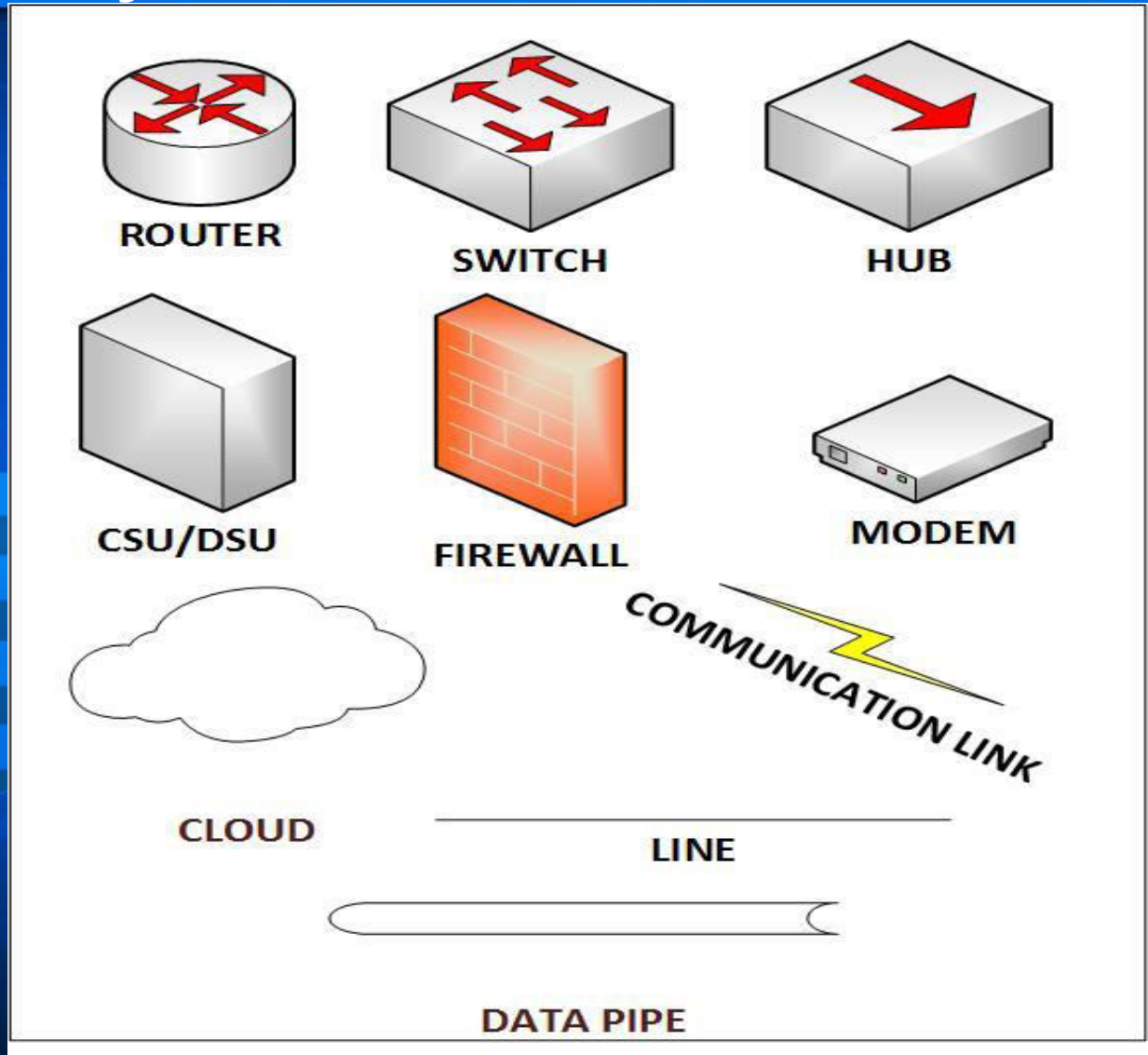


## L3 drawings (Logical)

- Should include every device that is involved with routing in your network.
- The drawing should again use simple objects that include the same details.
- Use of generic topology icon.

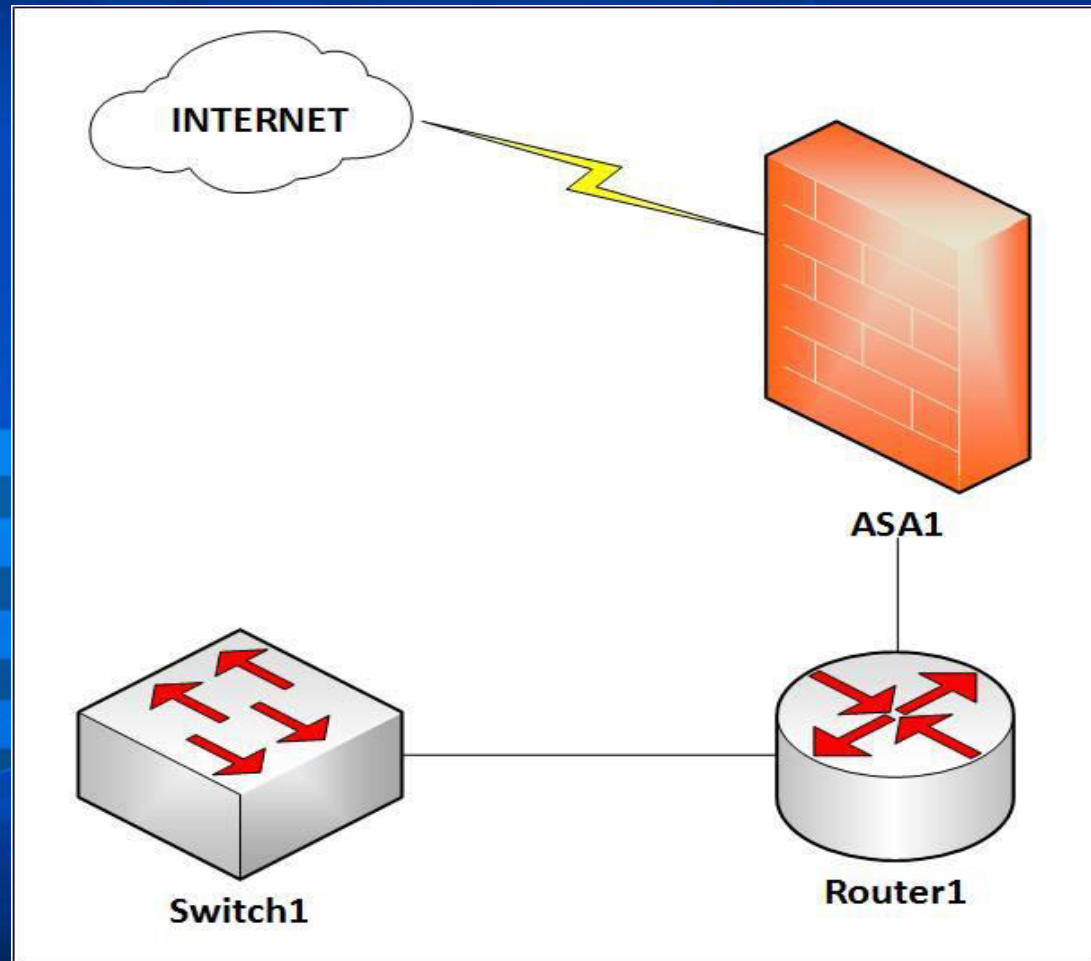
# Critical network documentation

## Topology Icons/Symbols





## Logical



## Circuit Inventory

- Circuit ID: (12/ABCD/123456/MC)
- Circuit Type (DSL/Frame relay/ISDN/Leased line,VSAT)
- Bandwidth (1.5Mbps, 50Mbps, 75Mbps CIR)
- WAN Type (P2P, MPLS, Internet)
- Termination equipment (RTR-BRANCH1)
- Carrier (PLDT, Globe, Eastern Tel)
- Carrier NOC # (+632 929 6626)
- 1stHOP (123 Some St, Dil, Q.C. )
- NxtHOP (456 Some St, Ortigas, Pasig)
- Turn up date (6/29/2017)
- Contract expiration (6/28/2018)
- Notes

# Critical network documentation

## IP address allocation table

Supernet	Subnet >=/24	Mask	Use
10.10.1.0/30	Regional Office		
	172.16.20.0	/24	Data VLAN
	172.16.109.0	/24	Voice VLAN
	172.16.21.0	/24	Data Reserve VLAN
	172.16.22.0	/24	Voice Reserve VLAN
??	Branch #1		
	??	/24	Data VLAN
	??	/24	Voice VLAN

Summary Table

# Critical network documentation

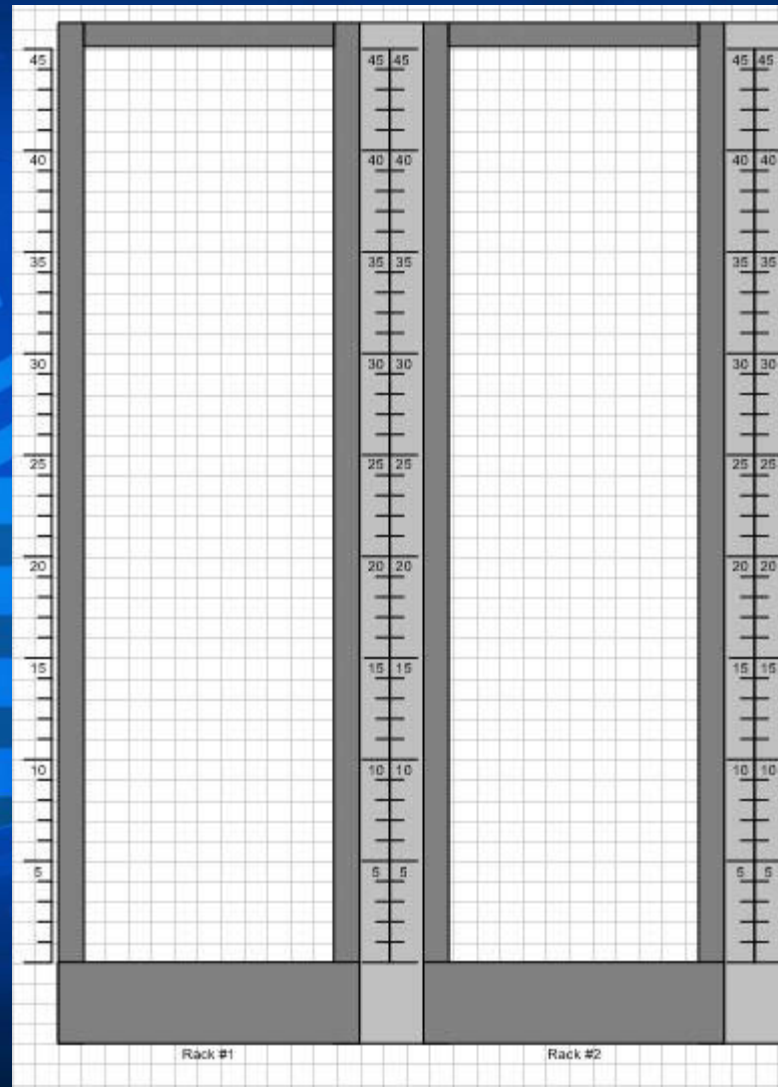
## IP address allocation table

Main Site						
Network : 172.16.20.0/24						<a href="#">Go to Summary</a>
VLAN ID: 10						
		Address	Hostname	Description	Date Assigned	Assigned by who
		0	Network	Network	---	---
		1	MAIN-VLANXX-GW	Default Gateway/HSRP address	2/1/2010	ICT Focal CO
		2	SWX-VLANX	Switch 1 VLAN interface	2/1/2010	ICT Focal CO
		3	SWX-VLANX	Switch 2 VLAN interface	2/1/2010	ICT Focal CO
		4		Reserved for network		
		5		Reserved for network		
		6		Reserved for network		
		7		Reserved for network		
		8		Reserved for network		
		9		Reserved for network		
		10		Reserved for network		
		11		Reserved for network		
		12		Reserved for network		
		13		Reserved for network		
		14		Reserved for network		
		15		Reserved for network		
		16				
		255	Broadcast	Broadcast Address		

## Useful Network Documentation



## Rack layout diagram



# Wi-Fi diagram



# Cable plan



# Useful network documentation

## Patching table

Network Patch Panel Table					
Patch Panel ID	Port ID	End Point	Office	Location	Remarks
<b>PPID-48-001-A</b>	A1	Workstation	Accounting	Main Bldg. (2nd Flr.)	Accounting Chief
<b>Server Room</b>	A2	IP Phone	Budget	Main Bldg. (Gnd Flr.)	
	A3	Workstation	Accounting	Main Bldg. (2nd Flr.)	
	A4	AP001	Lobby	Main Bldg. (Gnd Flr.)	
	A5	AP002	ORD	Main Bldg. (3rd Flr.)	Regional Dir Office
	.				
	.				
	.				
	A48	C3560 Switch	LMS	LMS Bldg. (2nd Flr.)	Trunk port to LMS
<b>PPID-24-001-B</b>	B1				
<b>Server Room</b>	B2				
	B3				
	B4				
	B5				
	.				
	.				
	.				
	B24				



# Useful network documentation

## Asset tracking





A stylized logo is positioned on the left side of the slide. It features a blue tree-like structure with multiple horizontal branches, set against a background of green wavy lines. The entire logo is enclosed within a circular frame that has a dotted border. The background of the slide is a deep blue with concentric circles and a dashed line pattern.

# Network Documentation Best Practices: What's Important & How To Track It

**END OF SLIDES**  
**THANK YOU VERY MUCH.**